

# MARSTAIR

REFRIGERATION AND SPECIALIST AIR CONDITIONING

## TECHNICAL MANUAL



## CX(E) SPLIT SYSTEMS

## CX(E) LOW TEMPERATURE SPLIT SYSTEMS

| <b><u>CONTENTS</u></b>                          | <b><u>PAGE</u></b> |
|---|--------------------|
| PART NUMBERS, UNIT COMBINATIONS, OPTIONS        | 3                  |
| DIMENSIONS & WEIGHTS, PERFORMANCE DATA          | 4                  |
| AIR FLOW, SOUND POWER AND SOUND PRESSURE LEVELS | 5                  |
| ELECTRICAL DATA                                 | 6                  |
| CX(E) DIMENSIONS                                | 7                  |
| INSTALLATION                                    | 8                  |
| CKC PIPEWORK                                    | 8                  |
| CKC REFRIGERANT                                 | 10                 |
| ELECTRICAL: CONNECTIONS & FUSES                 | 12                 |
| CX MATCHES                                      | 12                 |
| WIRING DIAGRAMS                                 | 13                 |
| CX(E) CONTROLS                                  | 15                 |
| CKC INSTALLATION: DIMENSIONS                    | 16                 |
| <b>COMPONENT IDENTIFICATION</b>                 |                    |
| CX(E) UNITS                                     | 18                 |
| CKC UNITS                                       | 19                 |
| COMMISSIONING CHECK LIST                        | 20                 |

1. TEV Ltd recommend that personnel working on this equipment be skilled and fully conversant with the appropriate Air Conditioning, Refrigeration and Electrical practices and have sound knowledge of current Industrial Safe Working practices.
2. CX(E) models are electromechanical / Electronic control units that use R407C refrigerant; they provide cooling within the range of 2.8 – 8.5 kW. These units are matched with CKC outdoor units to complete a system.
3. CX(E) units are fitted with an expansion assembly, allowing the use of a liquid line. This can be transferred to the outdoor unit (CKC only), when an expansion line is required to accommodate longer pipe runs.
4. These units contain live electrical components, moving parts and refrigerant under pressure. Always site out of reach of children and protect from vandalism.
5. The data plate only gives information for the CX(E) unit. For system details add input power and current of indoor and outdoor unit, including any heater load.

## GENERAL

## PART NUMBERS

|                    |          |          |          |          |          |
|--------------------|----------|----------|----------|----------|----------|
| <b>MODEL</b>       | CX 30    | CX 40    | CX 50    | CX 70    | CX 90    |
| <b>PART NUMBER</b> | 55917001 | 55917002 | 55917003 | 55917004 | 55917005 |
| <b>MODEL</b>       | CXE 30   | CXE 40   | CXE 50   | CXE 70   | CXE 90   |
| <b>PART NUMBER</b> | 55917017 | 55917016 | 55917015 | 55917014 | 55917019 |

|                    |               |               |               |               |               |               |               |
|--------------------|---------------|---------------|---------------|---------------|---------------|---------------|---------------|
| <b>MODEL</b>       | CKC 20<br>1ph | CKC 30<br>1ph | CKC 50<br>1ph | CKC 80<br>1ph | CKC 80<br>3ph | CKC 90<br>1ph | CKC 90<br>3ph |
| <b>PART NUMBER</b> | 55050720      | 55050730      | 55050722      | 55050723      | 55050724      | 55050771      | 55050778      |

### Low Temperature Match

|                    |          |          |          |          |
|--------------------|----------|----------|----------|----------|
| <b>MODEL</b>       | CXE 40   | CXE 50   | CXE 70   | CXE90    |
| <b>PART NUMBER</b> | 55917016 | 55917015 | 55917014 | 55917019 |

|                    |               |               |               |              |
|--------------------|---------------|---------------|---------------|--------------|
| <b>MODEL</b>       | CKC 20<br>1ph | CKC 40<br>1ph | CKC 60<br>1ph | CKC80<br>1ph |
| <b>PART NUMBER</b> | 55020720      | 55020741      | 55020740      | 55050724     |

## UNIT COMBINATIONS

### Above 8°C System

| INDOOR UNIT | OUTDOOR UNIT |
|-------------|--------------|
| CX(E) 30    | CKC 20       |
| CX(E) 40    | CKC 30       |
| CX(E) 50    | CKC 50       |
| CX(E) 70    | CKC 80       |
| CX(E) 90    | CKC90        |

### Matches

### Above 4°C System Matches

| INDOOR UNIT | OUTDOOR UNIT |
|-------------|--------------|
| CXE 40      | CKC 20       |
| CXE 50      | CKC 40       |
| CXE 70      | CKC 60       |
| CXE 90      | CKC 80       |

## CX(E) OPTIONS

| OPTIONAL KITS |  |
|---------------|--|
| PART NUMBER   | DESCRIPTION                                      |
| 55900700      | 3kW heater (CX only)                             |
| 55900701      | Digital temperature display (CX only) std on CXE |
| 55900702      | De-ice thermostat (CX only)                      |
| 55900709*     | Extended pipe run CX 30/40/50 only               |
| 55900710*     | Extended pipe run CX 70/90 only                  |
| 55900715      | 3kW heater (CXE only)                            |

\* When matched with CKC outdoor unit

## DIMENSIONS & WEIGHTS

| MODEL     | UNPACKED |        |       |       | PACKED |        |       |       |
|-----------|----------|--------|-------|-------|--------|--------|-------|-------|
|           | CX(E)    | HEIGHT | WIDTH | DEPTH | WEIGHT | HEIGHT | WIDTH | DEPTH |
| <b>30</b> | 483      | 845    | 320   | 18    | 530    | 950    | 370   | 21    |
| <b>40</b> | 483      | 845    | 320   | 18    | 530    | 950    | 370   | 21    |
| <b>50</b> | 483      | 845    | 320   | 20    | 530    | 950    | 370   | 23    |
| <b>70</b> | 483      | 845    | 320   | 23    | 530    | 950    | 370   | 26    |
| <b>90</b> | 483      | 845    | 320   | 25    | 530    | 950    | 370   | 28    |

| MODEL     | UNPACKED |        |       |       |        | PACKED |        |       |       |        |     |
|-----------|----------|--------|-------|-------|--------|--------|--------|-------|-------|--------|-----|
|           | CKC      | HEIGHT | WIDTH | DEPTH | WEIGHT |        | HEIGHT | WIDTH | DEPTH | WEIGHT |     |
|           |          |        |       |       | 1Ph    | 3Ph    |        |       |       | 1Ph    | 3Ph |
| <b>20</b> | 620      | 900    | 310   | 46    | -      | 620    | 980    | 340   | 48    | -      |     |
| <b>30</b> | 620      | 900    | 310   | 48    | -      | 620    | 980    | 340   | 55    | -      |     |
| <b>50</b> | 720      | 1000   | 350   | 64    | -      | 730    | 1090   | 390   | 66    | -      |     |
| <b>60</b> | 720      | 1000   | 350   | 64    | -      | 730    | 1090   | 390   | 66    | -      |     |
| <b>80</b> | 720      | 1000   | 350   | 66    | 64     | 730    | 1090   | 390   | 68    | 66     |     |
| <b>90</b> | 820      | 1000   | 350   | 76    | 73     | 820    | 1090   | 390   | 78    | 75     |     |

# PERFORMANCE DATA (kW)

## Above 8°C System Matches

| CX | CKC | 12.7/10 & 27 |          |             |     |      | 12.7/10 & 32 |          |             |             |      | 12.7/10 & 35 |          |             |     |      |
|----|-----|--------------|----------|-------------|-----|------|--------------|----------|-------------|-------------|------|--------------|----------|-------------|-----|------|
|    |     | Total        | Sensible | Cellar Size |     | SHR  | Total        | Sensible | Cellar Size |             | SHR  | Total        | Sensible | Cellar Size |     | SHR  |
|    |     |              |          | kW          | kW  |      |              |          | Above<br>m³ | Below<br>m³ |      |              |          | kW          | kW  |      |
| 30 | 20  | 2.8          | 1.88     | 31          | 52  | 0.67 | 2.7          | 1.81     | 29          | 49          | 0.67 | 2.6          | 1.74     | 28          | 47  | 0.67 |
| 40 | 30  | 3.6          | 2.27     | 44          | 72  | 0.63 | 3.3          | 2.12     | 39          | 64          | 0.64 | 3.1          | 2.02     | 36          | 59  | 0.65 |
| 50 | 50  | 5.2          | 3.23     | 71          | 114 | 0.62 | 5            | 3.12     | 67          | 109         | 0.62 | 4.8          | 3.02     | 64          | 104 | 0.63 |
| 70 | 80  | 7.2          | 4.35     | 108         | 169 | 0.60 | 6.9          | 4.2      | 102         | 161         | 0.61 | 6.6          | 4.05     | 96          | 152 | 0.61 |
| 90 | 90  | 8.5          | 5.04     | 133         | 206 | 0.59 | 8.2          | 4.85     | 127         | 197         | 0.59 | 8            | 4.68     | 123         | 192 | 0.59 |

| CX | CKC | 8/6 & 27 |          |             |     |      | 8/6 & 32 |          |             |             |      | 8/6 & 35 |          |             |     |      |
|----|-----|----------|----------|-------------|-----|------|----------|----------|-------------|-------------|------|----------|----------|-------------|-----|------|
|    |     | Total    | Sensible | Cellar Size |     | SHR  | Total    | Sensible | Cellar Size |             | SHR  | Total    | Sensible | Cellar Size |     | SHR  |
|    |     |          |          | kW          | kW  |      |          |          | Above<br>m³ | Below<br>m³ |      |          |          | kW          | kW  |      |
| 30 | 20  | 2.45     | 1.6      | 22          | 36  | 0.65 | 2.3      | 1.52     | 20          | 34          | 0.66 | 2.2      | 1.47     | 19          | 33  | 0.67 |
| 40 | 30  | 3        | 1.95     | 30          | 51  | 0.65 | 2.8      | 1.83     | 27          | 45          | 0.65 | 2.6      | 1.728    | 25          | 42  | 0.66 |
| 50 | 50  | 4.4      | 2.78     | 49          | 80  | 0.63 | 4.2      | 2.69     | 47          | 76          | 0.64 | 4        | 2.6      | 45          | 73  | 0.65 |
| 70 | 80  | 6.1      | 3.9      | 75          | 118 | 0.64 | 5.9      | 3.75     | 71          | 112         | 0.64 | 5.7      | 3.63     | 67          | 107 | 0.64 |
| 90 | 90  | 7.3      | 4.55     | 93          | 144 | 0.62 | 7.1      | 4.4      | 89          | 138         | 0.62 | 7        | 4.31     | 86          | 134 | 0.62 |

## Above 4°C System Matches

| CX | CKC | 5/3 & 27 |          |      | 5/3 & 32 |          |      | 5/3 & 35 |          |      |
|----|-----|----------|----------|------|----------|----------|------|----------|----------|------|
|    |     | Total    | Sensible | SHR  | Total    | Sensible | SHR  | Total    | Sensible | SHR  |
|    |     | kW       | kW       |      | kW       | kW       |      | kW       | kW       |      |
| 40 | 20  | 2.1      | 1.6      | 0.76 | 1.9      | 1.45     | 0.76 | 1.8      | 1.38     | 0.77 |
| 50 | 40  | 3.3      | 2.46     | 0.75 | 3.1      | 2.32     | 0.75 | 3        | 2.25     | 0.75 |
| 70 | 60  | 5        | 3.53     | 0.71 | 4.7      | 3.33     | 0.71 | 4.5      | 3.2      | 0.71 |
| 90 | 80  | 5.9      | 4        | 0.68 | 5.7      | 3.9      | 0.68 | 5.5      | 3.8      | 0.69 |

### Qualification of Cellar sizing

- Based on standard Cellar Construction
- Maximum product load 16 l/m³
- Product cooling time 24 hours (Nominal plant running time 18 hours)
- Product entering room 25°C

# AIR FLOWS

| MODEL           | m³/s |
|-----------------|------|
| <b>CX(E) 30</b> | 0.61 |
| <b>CX(E) 40</b> | 0.61 |
| <b>CX(E) 50</b> | 0.66 |
| <b>CX(E) 70</b> | 0.58 |
| <b>CX(E) 90</b> | 0.55 |

| MODEL         | m³/s |
|---------------|------|
| <b>CKC 20</b> | 0.32 |
| <b>CKC 30</b> | 0.71 |
| <b>CKC40</b>  | 0.71 |
| <b>CKC 50</b> | 0.91 |
| <b>CKC 60</b> | 0.91 |
| <b>CKC 80</b> | 0.91 |
| <b>CKC90</b>  | 0.91 |

# SOUND POWER AND SOUND PRESSURE LEVELS

## INDOOR UNIT

| MAXIMUM SPEED   | SOUND POWER LEVELS |      |      |      |      |      | SOUND PRESSURE LEVELS |
|-----------------|--------------------|------|------|------|------|------|-----------------------|
|                 | Frequency Hz       |      |      |      |      |      |                       |
|                 | 125                | 250  | 500  | 1K   | 2K   | 4K   | dB(A)                 |
| <b>CX(E) 30</b> | 69.1               | 67.7 | 67.6 | 65.6 | 62.2 | 56   | 39                    |
| <b>CX(E) 40</b> | 69.1               | 67.7 | 67.6 | 65.6 | 62.2 | 56   | 39                    |
| <b>CX(E) 50</b> | 71.7               | 69.2 | 69.1 | 67.1 | 63.2 | 58.5 | 40.5                  |
| <b>CX(E) 70</b> | 70.1               | 68.2 | 68.6 | 66.1 | 63.2 | 57.5 | 39.9                  |
| <b>CX(E) 90</b> | 70.1               | 68.2 | 68.6 | 66.1 | 63.2 | 57.5 | 39.9                  |

*Sound Pressure Levels in dB(A) at 10m distance in free field conditions. (Reference  $2 \times 10^{-5} \text{ N/m}^2$ )*

## OUTDOOR UNIT

| MAXIMUM SPEED | SOUND POWER LEVELS |     |     |    |    |    | SOUND PRESSURE LEVELS |
|---------------|--------------------|-----|-----|----|----|----|-----------------------|
|               | Frequency Hz       |     |     |    |    |    |                       |
|               | 125                | 250 | 500 | 1K | 2K | 4K | dB(A)                 |
| <b>CKC 20</b> | 77                 | 67  | 69  | 65 | 60 | 54 | 39.2                  |
| <b>CKC 30</b> | 77                 | 68  | 69  | 65 | 60 | 54 | 39.3                  |
| <b>CKC 40</b> | 77                 | 67  | 69  | 65 | 60 | 54 | 39.2                  |
| <b>CKC 50</b> | 74                 | 68  | 67  | 66 | 61 | 54 | 38.9                  |
| <b>CKC 60</b> | 73                 | 68  | 68  | 66 | 62 | 54 | 39.3                  |
| <b>CKC 80</b> | 71                 | 69  | 68  | 65 | 60 | 54 | 38.7                  |
| <b>CKC90</b>  | 82                 | 72  | 69  | 69 | 63 | 57 | 42.2                  |

*Sound Pressure Levels (SPL) at 10m distance in free field conditions. (Reference  $2 \times 10^{-5} \text{ N/m}^2$ )*

## ELECTRICAL DATA

### Above 8°C System Matches

| MODEL<br>INDOOR/OUTDOOR  | 1 PH 230V 50Hz |         |                 |         |                                 |
|--------------------------|----------------|---------|-----------------|---------|---------------------------------|
|                          | INPUT POWER    |         | FULL LOADS AMPS |         | SYSTEM MAX.<br>STARTING CURRENT |
|                          | COOLING        | HEATING | COOLING         | HEATING |                                 |
|                          | kW             | kW      | AMPS            | AMPS    | AMPS                            |
| <b>CX(E) 30 + CKC 20</b> | 1.3            | 2.9     | 7.7             | 13.8    | 30                              |
| <b>CX(E) 40 + CKC 30</b> | 1.6            | 2.9     | 8.2             | 13.8    | 38                              |
| <b>CX(E) 50 + CKC 50</b> | 2.2            | 2.9     | 9.7             | 13.8    | 60                              |
| <b>CX(E) 70 + CKC 80</b> | 3.2            | 2.9     | 12.3            | 13.8    | 78                              |
| <b>CX(E) 90 + CKC 90</b> | 4.4            | 2.9     | 17.7            | 13.8    | 116                             |

| MODEL<br>INDOOR/OUTDOOR  | 3 PH 4000V 50Hz |         |                 |         |                                 |
|--------------------------|-----------------|---------|-----------------|---------|---------------------------------|
|                          | INPUT POWER     |         | FULL LOADS AMPS |         | SYSTEM MAX.<br>STARTING CURRENT |
|                          | COOLING         | HEATING | COOLING         | HEATING |                                 |
|                          | kW              | kW      | AMPS            | AMPS    | AMPS                            |
| <b>CX(E) 70 + CKC 80</b> | 3.2             | 2.9     | 5.7             | 13.8    | 42                              |
| <b>CX(E) 90 + CKC 90</b> | 4.4             | 2.9     | 7.9             | 13.8    | 50                              |

### Above 4°C System Matches

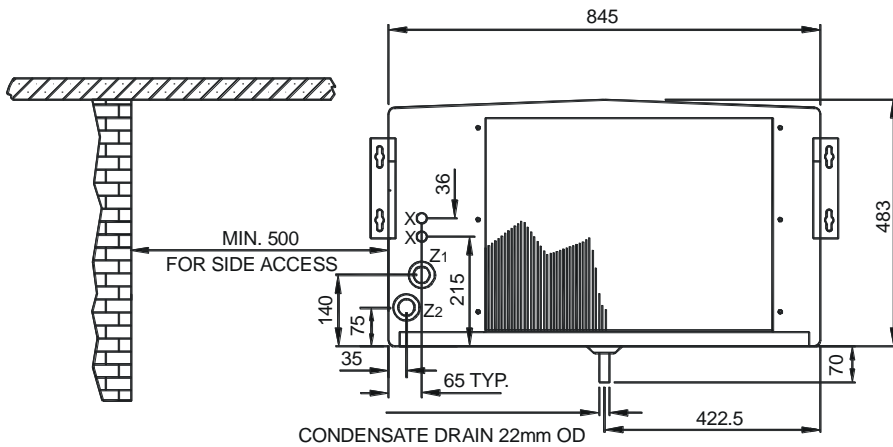
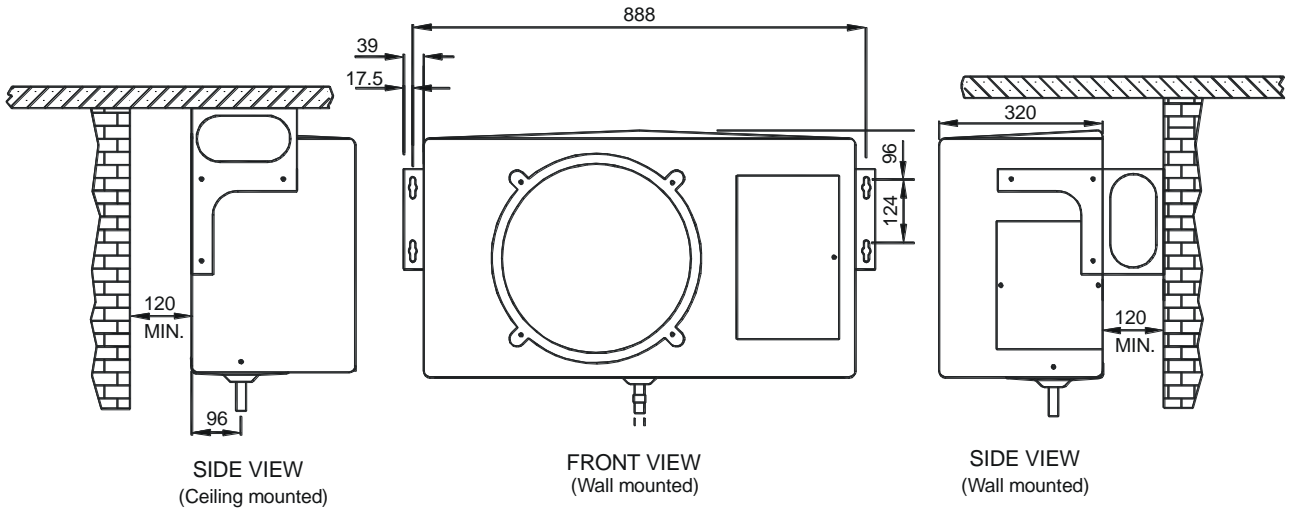
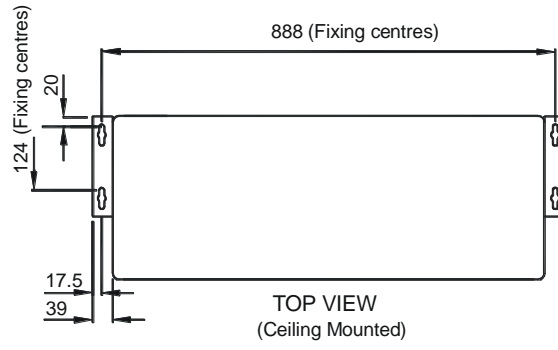
| MODEL<br>INDOOR/OUTDOOR | 1 PH 230V 50Hz |         |                 |         |                                 |
|-------------------------|----------------|---------|-----------------|---------|---------------------------------|
|                         | INPUT POWER    |         | FULL LOADS AMPS |         | SYSTEM MAX.<br>STARTING CURRENT |
|                         | COOLING        | HEATING | COOLING         | HEATING |                                 |
|                         | kW             | kW      | AMPS            | AMPS    | AMPS                            |
| <b>CXE 40 + CKC 20</b>  | 1.3            | 2.9     | 7.7             | 13.8    | 30                              |
| <b>CXE 50 + CKC 40</b>  | 2.1            | 2.9     | 10.2            | 13.8    | 52                              |
| <b>CXE 70 + CKC 60</b>  | 2.4            | 2.9     | 9.8             | 13.8    | 63                              |
| <b>CXE 90 + CKC 80</b>  | 3.2            | 2.9     | 12.3            | 13.8    | 78                              |

### UNIT ELECTRICAL LOADS [230V 50Hz 1Ph (A) or 400V 50Hz 3Ph (A/Ph)]

| MODEL           | FAN MOTOR | HEATER |
|-----------------|-----------|--------|
| <b>CX(E) 30</b> | 0.8       | 13     |
| <b>CX(E) 40</b> | 0.8       | 13     |
| <b>CX(E) 50</b> | 0.8       | 13     |
| <b>CX(E) 70</b> | 0.8       | 13     |
| <b>CX(E) 90</b> | 0.8       | 13     |

| CKC                                 | 20   | 30   | 40   | 50  | 60  | 80   | 90   |
|-------------------------------------|------|------|------|-----|-----|------|------|
| Fan motor                           | 0.4  | 0.6  | 0.6  | 0.6 | 0.6 | 0.6  | 0.6  |
| R407C compressor (1 Ph) nominal FLA | 6    | 10.4 | 10.2 | 8.3 | 9.8 | 10.9 | 16.3 |
| R407C compressor (3 Ph) nominal FLA | -    | -    | -    | -   | -   | 4.3  | 6.5  |
| Crankcase heater                    | 0.25 | 0.25 | 0.25 | -   | -   | -    | -    |

# CX(E) DIMENSIONS



X = Interconnecting Wiring  
 Z<sub>1</sub> = Suction  
 Z<sub>2</sub> = Liquid / Expansion

DIMENSIONS (mm)

# INSTALLATION

| CONTENTS   |     |                       |
|--|-----|-----------------------|
| PARTS DESCRIPTION  | QTY | ACTION                |
| Envelope containing operating instructions and Declaration of Conformity | 1   | Pass to the end user. |
| Mounting brackets  | 2   | Use to hang unit.     |

|                                |   |  |
|--------------------------------|---|--|
| Drain Stub/Nut/Gasket          | 1 | Fitted by installer.   |
| Drain stub adaptor             | 1 | Convert to 3/4" drain if required.   |
| Screw M5                       | 6 | To fix brackets to unit.   |
| Washer nylon                   | 6 | To fix brackets to unit.   |
| Washer M5 shakeproof           | 6 | To fix brackets to unit.   |
| Reducing flare nut 1/2" – 3/8" | 1 | Fit to liquid connection on the CXE 70 indoor unit when matched with a CKC 60 outdoor unit |

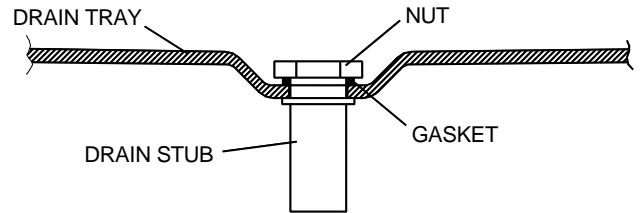
The unit may be mounted on a wall or solid ceiling using brackets supplied. It should be matched with the appropriately sized outdoor unit; this instruction should be used in conjunction with the outdoor unit installation instructions.

## UNIT COMBINATIONS

| Minimum Set Temperature 8°C |              |
|-----------------------------|--------------|
| INDOOR UNIT                 | OUTDOOR UNIT |
| CX(E) 30                    | CKC 20       |
| CX(E) 40                    | CKC 30       |
| CX(E) 50                    | CKC 50       |
| CX(E) 70                    | CKC 80       |
| CX(E) 90                    | CKC 90       |

| Minimum Set Temperature 4°C |              |
|-----------------------------|--------------|
| INDOOR UNIT                 | OUTDOOR UNIT |
| CXE 40                      | CKC 20       |
| CXE 50                      | CKC 40       |
| CXE 70                      | CKC 60       |
| CXE 90                      | CKC 80       |

1. Fit all kits prior to installing the unit. (Heater kit is easier to fit when unit has been mounted).
2. Ensure that the mounting surface will support the operating weight of the unit (see table below).
3. Mark out the mounting positions and drill holes to suit 6mm rawlbolt shields or equivalent strength fasteners (ensure that the unit is positioned to give sufficient access (min 0.5m) to the removable side panel).
4. Fix the mounting brackets to the unit in the correct position for wall or ceiling mounting.
5. Raise the unit into position and secure the fixings, ensuring that it is square and level.
6. Remove the drain tray then fit the drain stub, nut & gasket. Refit the drain tray.



## NITROGEN CHARGE

The unit contains a small charge of dry nitrogen, which should be discharged into the atmosphere. This is a non-toxic, non-ozone depleting gas with no global warming potential.

## FITTING LOSSES, in equivalent straight lengths of pipe (m).

| FITTING             | Pipe Size OD |      |      |      |      | To calculate the total equivalent length, the equivalent lengths of all fittings in a pipe run must be added to the actual length of pipe in the run: these are the fittings most likely to be used.<br><br>R = Radius of bend<br>d = Diameter of tube<br>C = Centres of bend |
|---------------------|--------------|------|------|------|------|---|
|                     | 3/8"         | 1/2" | 5/8" | 3/4" | 7/8" |   |
| 45° Bend            | 0.12         | 0.15 | 0.18 | 0.21 | 0.24 |   |
| 90° Bend R/d = 1    | 0.37         | 0.43 | 0.49 | 0.55 | 0.61 |   |
| 90° Bend R/d = 1.5  | 0.24         | 0.27 | 0.3  | 0.37 | 0.43 |   |
| 180° Bend R/d = 1.5 | 0.73         | 0.91 | 1.1  | 1.28 | 1.46 |   |
| 180° Bend C/d = 2.5 | 0.46         | 0.55 | 0.64 | 0.76 | 0.85 |   |
| 90° Elbow           | 0.67         | 0.85 | 1.04 | 1.25 | 1.46 |   |

## A. USING SUCTION AND LIQUID LINES:

With the expansion device connected to the indoor unit, the equivalent pipe run should be 20m maximum, including a maximum lift of 7.5m. Fully insulate the suction line. Ensure the suction pipe is insulated well over the drain tray at the indoor unit. Liquid lines should be routed to avoid hot areas. This prevents flash gas forming, which may result in erratic control of liquid refrigerant to the evaporator.

| SYSTEM          | SIZES (m) |      |      |      | LIQUID LINE |      |      |
|-----------------|-----------|------|------|------|-------------|------|------|
|                 | 3/8"      | 1/2" | 5/8" | 3/4" | 1/4"        | 3/8" | 1/2" |
| CX(E)30 + CKC20 | 7.5       | 20   | -    | -    | 20          | -    | -    |
| CX(E)40 + CKC30 | -         | 15   | 20   | -    | -           | 20   | -    |
| CX(E)50 + CKC50 | -         | 7.5  | 18   | 20   | -           | 20   | -    |
| CX(E)70 + CKC80 | -         | -    | 11   | 20   | -           | 20   | -    |
| CX(E)90 + CKC90 | -         | -    | 10   | 20   | -           | -    | 20   |

| SYSTEM          | SUCTION LINE PIPE SIZES (m) |      |      |      | LIQUID LINE |      |      |
|-----------------|-----------------------------|------|------|------|-------------|------|------|
|                 | 3/8"                        | 1/2" | 5/8" | 3/4" | 1/4"        | 3/8" | 1/2" |
| CX(E)40 + CKC20 | 7.5                         | 20   | -    | -    | 20          | -    | -    |
| CX(E)50 + CKC40 | -                           | 15   | 20   | -    | -           | 20   | -    |
| CX(E)70 + CKC60 | -                           | 7.5  | 18   | 20   | -           | 20   | -    |
| CX(E)90 + CKC80 | -                           | -    | 11   | 20   | -           | 20   | -    |

## B. USING SUCTION AND EXPANSION LINES

The expansion assembly must be removed from the indoor unit and connected to the outdoor unit allowing a pipe run of up to 80m, including a maximum lift of 20m (CKC20 maximum 50m with 7.5m lift).

CX(E) units only, remove the right hand panel cover plate from the indoor unit and remove the expansion assembly. [Make good the gap using Extended Pipe Run Kit 55900709 (30,40,50), 55900710 (70).]

Fit the expansion assembly onto the outdoor unit liquid line service valve. Fully insulate both the suction and expansion lines, including the expansion device: ensure the pipes are insulated well over the drain tray at the indoor unit.

CX(E) units only, remove the right hand panel cover plate from the indoor unit and remove the expansion assembly. [Make good the gap using Extended Pipe Run Kit 55900709 (30,40,50), 55900710 (70,90).]

| SYSTEM          | SIZES (m) |      |      |      |      |          | EXPANSION LINE |      |      |
|-----------------|-----------|------|------|------|------|----------|----------------|------|------|
|                 | 3/8"      | 1/2" | 5/8" | 3/4" | 7/8" | 1 - 1/8" | 3/8"           | 1/2" | 5/8" |
| CX(E)30 + CKC20 | 7.5       | 23   | 50   | -    | -    | -        | 50             | -    | -    |
| CX(E)40 + CKC30 | -         | 15   | 50   | 80   | -    | -        | 7.5            | 80   | -    |
| CX(E)50 + CKC50 | -         | 7.5  | 18   | 50   | 80   | -        | 7.5            | 50   | 80   |
| CX(E)70 + CKC80 | -         | -    | 11   | 30   | 80   | -        | -              | 50   | 80   |
| CX(E)90 + CKC90 | -         | -    | 10   | 25   | 55   | 80       | -              | 20   | 80   |

| SYSTEM          | SIZES (m) |      |      |      |      |          | EXPANSION LINE |      |      |
|-----------------|-----------|------|------|------|------|----------|----------------|------|------|
|                 | 3/8"      | 1/2" | 5/8" | 3/4" | 7/8" | 1 - 1/8" | 3/8"           | 1/2" | 5/8" |
| CX(E)40 + CKC20 | 7.5       | 23   | 50   | -    | -    | -        | 50             | 80   | -    |
| CX(E)50 + CKC40 | -         | 10   | 36   | 80   | -    | -        | 7.5            | 80   | -    |
| CX(E)70 + CKC60 | -         | -    | 14   | 36   | 80   | -        | 7.5            | 50   | 80   |
| CX(E)90 + CKC80 | -         | -    | 11   | 30   | 80   | -        | -              | 50   | 80   |

## PIPE CONNECTIONS

Units are supplied with the following male flare connections (sizes in inches):

| INDOOR UNIT        | CX(E)30 | CX(E)40 | CX(E)50 | CX(E)70 | CX(E)90 |
|--------------------|---------|---------|---------|---------|---------|
| LIQUID / EXPANSION | 3/8"    | 3/8"    | 3/8"    | 1/2"    | 1/2"    |
| SUCTION            | 1/2"    | 1/2"    | 1/2"    | 5/8"    | 5/8"    |

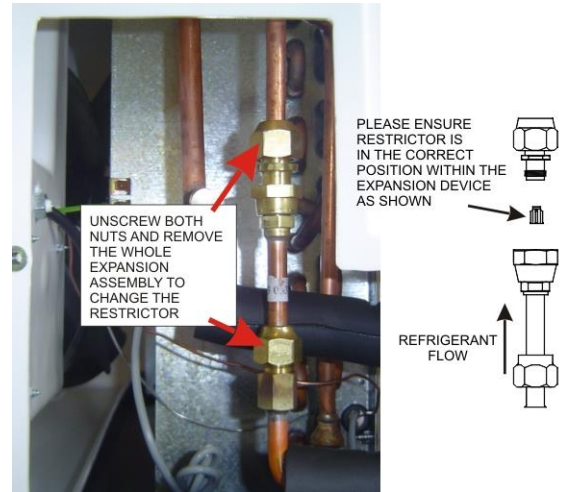
| OUTDOOR UNIT       | CKC20 | CKC30 | CKC40 | CKC50 | CKC60** | CKC80 | CKC 90 |
|--------------------|-------|-------|-------|-------|---------|-------|--------|
| LIQUID / EXPANSION | 3/8"  | 3/8"  | 3/8"  | 3/8"  | 3/8"    | 1/2"  | 1/2"   |
| SUCTION            | 1/2"  | 1/2"  | 1/2"  | 1/2"  | 5/8"    | 5/8"  | 5/8"   |

## RESTRICTORS

Indoor units are supplied with restrictors fitted.

### NOTE

When the CXE 40 is matched with a CKC 20.  
The restrictor in the indoor unit must be changed to 0.033"  
When the CXE 50 is matched with a CKC 40.  
The restrictor in the indoor unit remains as a 0.050"  
When the CXE 70 is matched with a CKC 60.  
The restrictor in the indoor unit must be changed to 0.057"  
When the CXE 90 is matched with a CKC 80.  
The restrictor in the indoor unit must be changed to 0.063"



## INTERCONNECTING PIPEWORK

1. The indoor unit has a low pressure charge of N<sub>2</sub>, which may be safely released into the atmosphere before connection. The service valves on the outdoor unit should remain closed (IN, fully clockwise) until pipework has been fitted and system evacuated.
2. Connecting the pipework
  - a. Remove the flare nuts from the suction and liquid service valves.
  - b. Ensure that the suction line is fully insulated: if an expansion line is used this should also be fully insulated.
  - c. Place the flare nuts over the incoming pipework and flare the pipe ends. The use of a little refrigeration oil on the flaring tool will help.
  - d. Connect the pipework between the units. Do not leave pipe ends, valves etc. open to the atmosphere.  
R407C is very hygroscopic and will absorb damaging levels of moisture if left open.  
Always use two spanners when tightening the flare nuts to avoid twisting the pipes. Use a small amount of refrigerant oil on the mating surfaces.
  - e. Sight glasses and filter driers are not necessary, but if required should be fitted between the outdoor unit liquid shut off valve and the expansion device.

## CKC REFRIGERANT

### EVACUATING

1. Connect a vacuum pump to the service ports on the outdoor unit valves and evacuate the system to 1000 microns (1 Torr) or better and allow to be held for a minimum of 15 minutes.
2. Replace the caps on the service ports, (torque to 25NM).

### ADDING REFRIGERANT

1. All units are fitted with head pressure control. The link wire across the orange terminals allows the fan to operate at full speed. **THIS SHOULD BE REMOVED AFTER CHARGING**
2. If a manual HP cut-out is fitted, ensure that the reset button is depressed.
3. A 3 minute delay occurs between successive compressor operations.
4. R407C should be introduced through the Schrader valve on the indoor unit, or the service port on the suction service valve on the outdoor unit. **No other refrigerant must be used.**

No extra POE oil needed with liquid lines.

Charges shown are for guidance: actual charge will depend on the individual application. It is recommended that you charge to a sweat line on the outlet of the evaporator and/or a full sight glass if fitted.

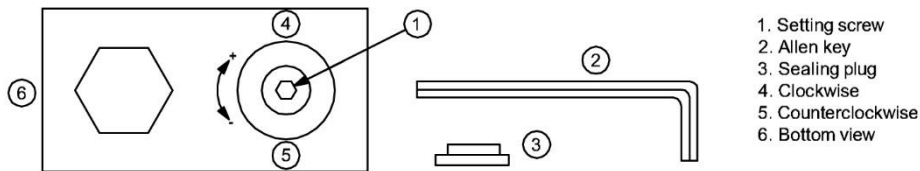
| Charge based on:-  | Liquid line   |        | Expansion line |        |        |
|--------------------|---|--------|----------------|--------|--------|
|                    | 1/4"  | 3/8"   | 3/8"           | 1/2"   | 5/8"   |
|                    | 25 g/m  | 60 g/m | 16 g/m         | 30 g/m | 48 g/m |
| Additional POE oil | 25g per 350g of additional refrigerant to a maximum of 300g |        |                |        |        |

**NOTE: The new 50 Series CKC are supplied with a Nitrogen holding charge. See pages 12 & 13 for refrigerant charge information.**

5. Run the system for a few minutes to allow it to stabilize. Where possible, charge to a sweat line on the evaporator. Typical suction pressure on short lines at UK conditions should be approx. **3.8bar (55 psig)**.

**6. Head pressure controller**

The head pressure controller is factory set to suit the refrigerant. It may be necessary to adjust this to suit site conditions, to raise or lower the nominal head pressure.



- a. With the system switched off, connect a high pressure gauge to the liquid line service valve.
- b. Switch on the system, and run for a few minutes to stabilise.
- c. The head pressure should be approximately:

**R407C: 275-280 psig (18.9-19.6barg)** to achieve this remove sealing plug and insert 2mm or 5/64" allen key into setting screw. Turn allen key clockwise (+) or counter clockwise (-) to readjust the setting. Do not turn setting screw **more than 3 turns clockwise (+3)**. Use following table as a quick guideline for setting:

After adjustment, re-insert sealing plug and make sure that it is properly fitted. IP65 protection requires firmly sealed plug

**NOTES:**

Tolerances for condensing temperatures setpoint:  $\pm 2K$

Min fan speed (0 rpm) and fan cut in pressure 200 psig (13.8 barg) are factory set and not adjustable.

**NOTE:** The condenser fan may stop if the operating pressure drops below 200 psig (13.8 barg)

## CX 17 SERIES MATCHED WITH CKC 20 SERIES UNITS WITH 5MM FINNED TUBE

| System |                 | Part Number |          |          | Liquid Line |      |      |      |
|--------|-----------------|-------------|----------|----------|-------------|------|------|------|
|        |                 | CX          | CXE      | CKC      | 5           | 10   | 15   | 20   |
| R407C  | CX(E)30 + CKC20 | 55917001    | 55917017 | 55020720 | 679         | 804  | 929  | 1054 |
|        | CX(E)40 + CKC30 | 55917002    | 55917016 | 55020730 | 884         | 1184 | 1484 | 1784 |
|        | CX(E)50 + CKC50 | 55917003    | 55917015 | 55020722 | 1286        | 1586 | 1886 | 2186 |
|        | CX(E)70 + CKC80 | 55917004    | 55917014 | 55020723 | 1410        | 1710 | 2010 | 2310 |
|        | CX(E)90 + CKC90 | 55917005    | 55917019 | 55020771 | 2320        | 2870 | 3420 | 3970 |

| System |                 | Part Number |          |          | Expansion Line |      |      |      |      |      |      |      |      |      |      |      |      |
|--------|-----------------|-------------|----------|----------|----------------|------|------|------|------|------|------|------|------|------|------|------|------|
|        |                 | CX          | CXE      | CKC      | 20             | 25   | 30   | 35   | 40   | 45   | 50   | 55   | 60   | 65   | 70   | 75   | 80   |
| R407C  | CX(E)30 + CKC20 | 55917001    | 55917017 | 55020720 | 884            | 964  | 1044 | 1124 | 1204 | 1284 | 1364 |      |      |      |      |      |      |
|        | CX(E)40 + CKC30 | 55917002    | 55917016 | 55020730 | 1174           | 1324 | 1474 | 1624 | 1774 | 1924 | 2074 | 2224 | 2374 | 2524 | 2674 | 2824 | 2974 |
|        | CX(E)50 + CKC50 | 55917003    | 55917015 | 55020722 | 1661           | 1811 | 1961 | 2111 | 2261 | 2411 | 2561 | 3701 | 3941 | 4181 | 4421 | 4661 | 4901 |
|        | CX(E)70 + CKC80 | 55917004    | 55917014 | 55020723 | 1710           | 1860 | 2010 | 2160 | 2310 | 2460 | 2610 | 3750 | 3990 | 4230 | 4470 | 4710 | 4950 |
|        | CX(E)90 + CKC90 | 55917005    | 55917019 | 55020771 | 2370           | 2970 | 3210 | 3450 | 3690 | 3930 | 4170 | 4410 | 4650 | 4890 | 5130 | 5370 | 5610 |

## CXE 17 SERIES MATCHED WITH CKC 50 SERIES UNITS WITH MICROCHANNEL COIL

| System |                 | Part Number |          |          | Liquid Line |      |      |      |
|--------|-----------------|-------------|----------|----------|-------------|------|------|------|
|        |                 | CX          | CXE      | CKC      | 5           | 10   | 15   | 20   |
| R407C  | CX(E)30 + CKC20 | 55917001    | 55917017 | 55050720 | 549         | 674  | 799  | 924  |
|        | CX(E)40 + CKC30 | 55917002    | 55917016 | 55050730 | 754         | 1054 | 1354 | 1654 |
|        | CX(E)50 + CKC50 | 55917003    | 55917015 | 55050722 | 1086        | 1386 | 1686 | 1986 |
|        | CX(E)70 + CKC80 | 55917004    | 55917014 | 55050723 | 1210        | 1510 | 1810 | 2110 |
|        | CX(E)90 + CKC90 | 55917005    | 55917019 | 55050771 | 2120        | 2670 | 3220 | 3770 |

| System |                 | Part Number |          |          | Expansion Line |      |      |      |      |      |      |      |      |      |      |      |      |
|--------|-----------------|-------------|----------|----------|----------------|------|------|------|------|------|------|------|------|------|------|------|------|
|        |                 | CX          | CXE      | CKC      | 20             | 25   | 30   | 35   | 40   | 45   | 50   | 55   | 60   | 65   | 70   | 75   | 80   |
| R407C  | CX(E)30 + CKC20 | 55917001    | 55917017 | 55050720 | 754            | 834  | 914  | 994  | 1074 | 1154 | 1234 |      |      |      |      |      |      |
|        | CX(E)40 + CKC30 | 55917002    | 55917016 | 55050730 | 1044           | 1194 | 1344 | 1494 | 1644 | 1794 | 1944 | 2094 | 2244 | 2394 | 2544 | 2694 | 2844 |
|        | CX(E)50 + CKC50 | 55917003    | 55917015 | 55050722 | 1461           | 1611 | 1761 | 1911 | 2061 | 2211 | 2361 | 3501 | 3741 | 3981 | 4221 | 4461 | 4701 |
|        | CX(E)70 + CKC80 | 55917004    | 55917014 | 55050723 | 1510           | 1660 | 1810 | 1960 | 2110 | 2260 | 2410 | 3550 | 3790 | 4030 | 4270 | 4510 | 4750 |
|        | CX(E)90 + CKC90 | 55917005    | 55917019 | 55050771 | 2170           | 2770 | 3010 | 3250 | 3490 | 3730 | 3970 | 4210 | 4450 | 4690 | 4930 | 5170 | 5410 |

## LOW TEMPERATURE CX 17 SERIES MATCHED WITH CKC 20 SERIES UNITS WITH 5MM FINNED TUBE COIL

| System |                 | Part Number |          | Liquid Line |      |      |      |
|--------|-----------------|-------------|----------|-------------|------|------|------|
|        |                 | CXE         | CKC      | 5           | 10   | 15   | 20   |
| R407C  | CXE 40 + CKC 20 | 55917016    | 55020720 | 589         | 714  | 839  | 964  |
|        | CXE 50 + CKC 40 | 55917015    | 55020741 | 876         | 1176 | 1476 | 1776 |
|        | CXE 70 + CKC 60 | 55917014    | 55020740 | 1270        | 1570 | 1870 | 2170 |
|        | CXE 90 + CKC 80 | 55917019    | 55020723 | 1510        | 1810 | 2110 | 2410 |

| System |                 | Part Number |          | Expansion Line |      |      |      |      |      |      |      |      |      |      |      |      |
|--------|-----------------|-------------|----------|----------------|------|------|------|------|------|------|------|------|------|------|------|------|
|        |                 | CXE         | CKC      | 20             | 25   | 30   | 35   | 40   | 45   | 50   | 55   | 60   | 65   | 70   | 75   | 80   |
| R407C  | CXE 40 + CKC 20 | 55917016    | 55020720 | 784            | 864  | 944  | 1024 | 1104 | 1184 | 1264 |      |      |      |      |      |      |
|        | CXE 50 + CKC 40 | 55917015    | 55020741 | 1036           | 1186 | 1336 | 1486 | 1636 | 1786 | 1936 | 2086 | 2236 | 2386 | 2536 | 2686 | 2836 |
|        | CXE 70 + CKC 60 | 55917014    | 55020740 | 1430           | 1580 | 1730 | 1880 | 2030 | 2180 | 2330 | 3470 | 3710 | 3950 | 4190 | 4430 | 4670 |
|        | CXE 90 + CKC 80 | 55917019    | 55020723 | 1810           | 1960 | 2110 | 2260 | 2410 | 2560 | 2710 | 3850 | 4090 | 4330 | 4570 | 4810 | 5050 |

## LOW TEMPERATURE CXE 17 SERIES MATCHED WITH CKC 50 SERIES UNITS WITH MICROCHANNEL COIL

| System |                 |          |          | Liquid Line |      |      |      |
|--------|-----------------|----------|----------|-------------|------|------|------|
|        |                 | CXE      | CKC      | 5           | 10   | 15   | 20   |
| R407C  | CXE 40 + CKC 20 | 55917016 | 55020720 | 459         | 584  | 709  | 834  |
|        | CXE 50 + CKC 40 | 55917015 | 55020741 | 676         | 976  | 1276 | 1576 |
|        | CXE 70 + CKC 60 | 55917014 | 55020740 | 1070        | 1370 | 1670 | 1970 |
|        | CXE 90 + CKC 80 | 55917019 | 55020723 | 1310        | 1610 | 1910 | 2210 |

| System |                 |          |          | Expansion Line |      |      |      |      |      |      |      |      |      |      |      |      |
|--------|-----------------|----------|----------|----------------|------|------|------|------|------|------|------|------|------|------|------|------|
|        |                 | CXE      | CKC      | 20             | 25   | 30   | 35   | 40   | 45   | 50   | 55   | 60   | 65   | 70   | 75   | 80   |
| R407C  | CXE 40 + CKC 20 | 55917016 | 55020720 | 654            | 734  | 814  | 894  | 974  | 1054 | 1134 |      |      |      |      |      |      |
|        | CXE 50 + CKC 40 | 55917015 | 55020741 | 836            | 986  | 1136 | 1286 | 1436 | 1586 | 1736 | 1886 | 2036 | 2186 | 2336 | 2486 | 2636 |
|        | CXE 70 + CKC 60 | 55917014 | 55020740 | 1230           | 1380 | 1530 | 1680 | 1830 | 1980 | 2130 | 3270 | 3510 | 3750 | 3990 | 4230 | 4470 |
|        | CXE 90 + CKC 80 | 55917019 | 55020723 | 1610           | 1760 | 1910 | 2060 | 2210 | 2360 | 2510 | 3650 | 3890 | 4130 | 4370 | 4610 | 4850 |

## ELECTRICAL CONNECTIONS

- Cables are routed to the terminal block via the cable cord grips at the rear of the unit and then through the back of the electrics box (see page 2).
- Cables **MUST** be size compatible with the recommended system fuse.

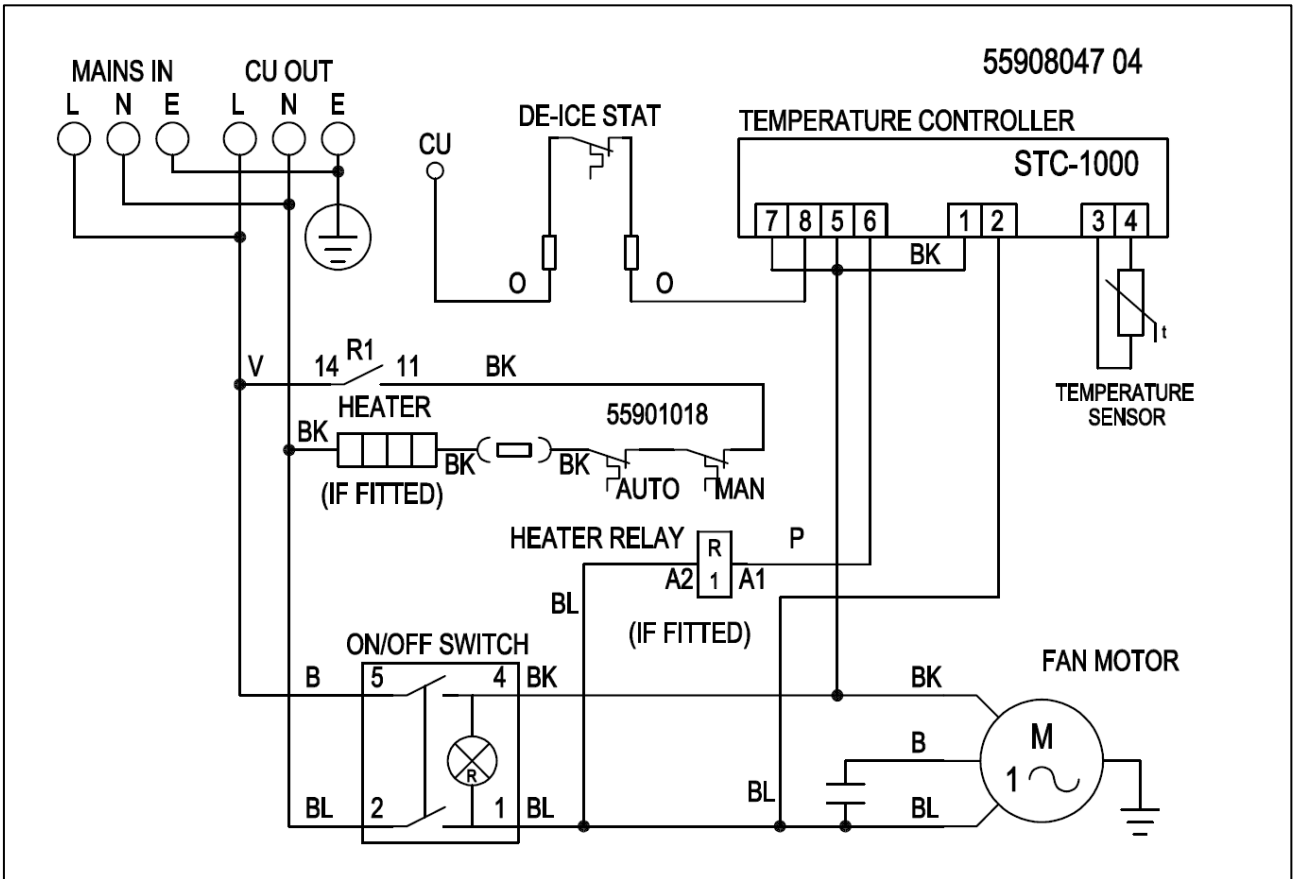
### FUSES

| SYSTEM        | COOL ONLY |        | WITH ELECTRIC |        |
|---------------|-----------|--------|---------------|--------|
|               | 1PH       | 3PH    | 1PH           | 3PH    |
| <b>CXE 30</b> | 16A       | -      | 16A           | -      |
| <b>CXE 40</b> | 20A       | -      | 20A           | -      |
| <b>CXE 50</b> | 20A       | -      | 20A           | -      |
| <b>CXE 70</b> | 20A       | 16A/PH | 20A           | 20A/PH |
| <b>CXE 90</b> | 25A       | 16A/PH | 25A           | 20A/PH |

**Note:** On 3 ph systems the supply must go to the CKC outdoor unit and then to the CXE indoor unit.

WIRING DIAGRAM

CXE

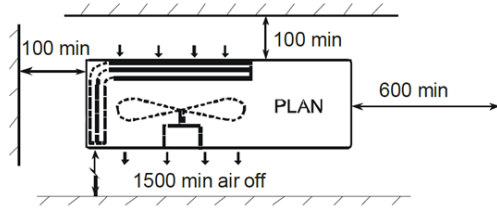




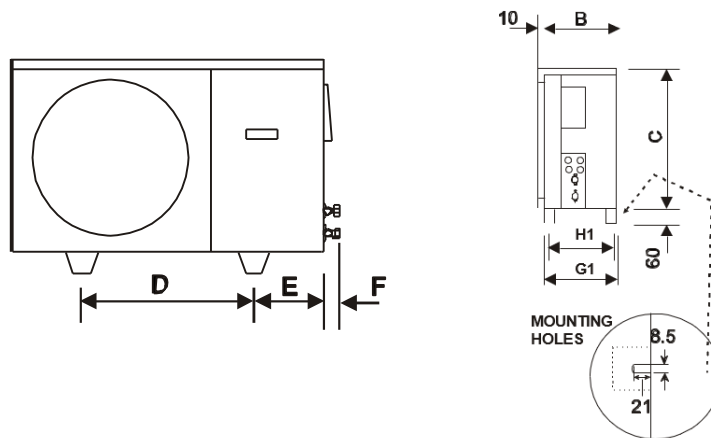
# CKC INSTALLATION

## MOUNTING

Whether floor or wall mounted, it is essential that the mounting surface is capable of supporting the unit weight. Leave space around the unit for air circulation and access for installation and maintenance.



Dimensions in mm.



| MODEL  | A    | B   | C   | D   | E   | F  | G   | H   |
|--------|------|-----|-----|-----|-----|----|-----|-----|
| CKC 20 | 900  | 300 | 560 | 525 | 185 | 60 | 295 | 275 |
| CKC 30 | 900  | 300 | 560 | 525 | 185 | 60 | 295 | 275 |
| CKC 40 | 900  | 300 | 560 | 525 | 185 | 60 | 295 | 275 |
| CKC 50 | 1000 | 350 | 660 | 495 | 250 | 60 | 345 | 325 |
| CKC 60 | 1000 | 350 | 660 | 495 | 250 | 60 | 345 | 325 |
| CKC 80 | 1000 | 350 | 660 | 495 | 250 | 60 | 345 | 325 |
| CKC 90 | 1000 | 350 | 760 | 495 | 250 | 70 | 345 | 325 |

- Individual pipe runs to a maximum of 20m, including 7.5m lift, are permissible with liquid lines, 80m

## CKC PIPEWORK

with expansion lines, provided good refrigeration practice is followed. Performance is based on 7.5m pipe runs. Correctly sized pipes for each installation will result in no significant loss of capacity on extended pipe runs.

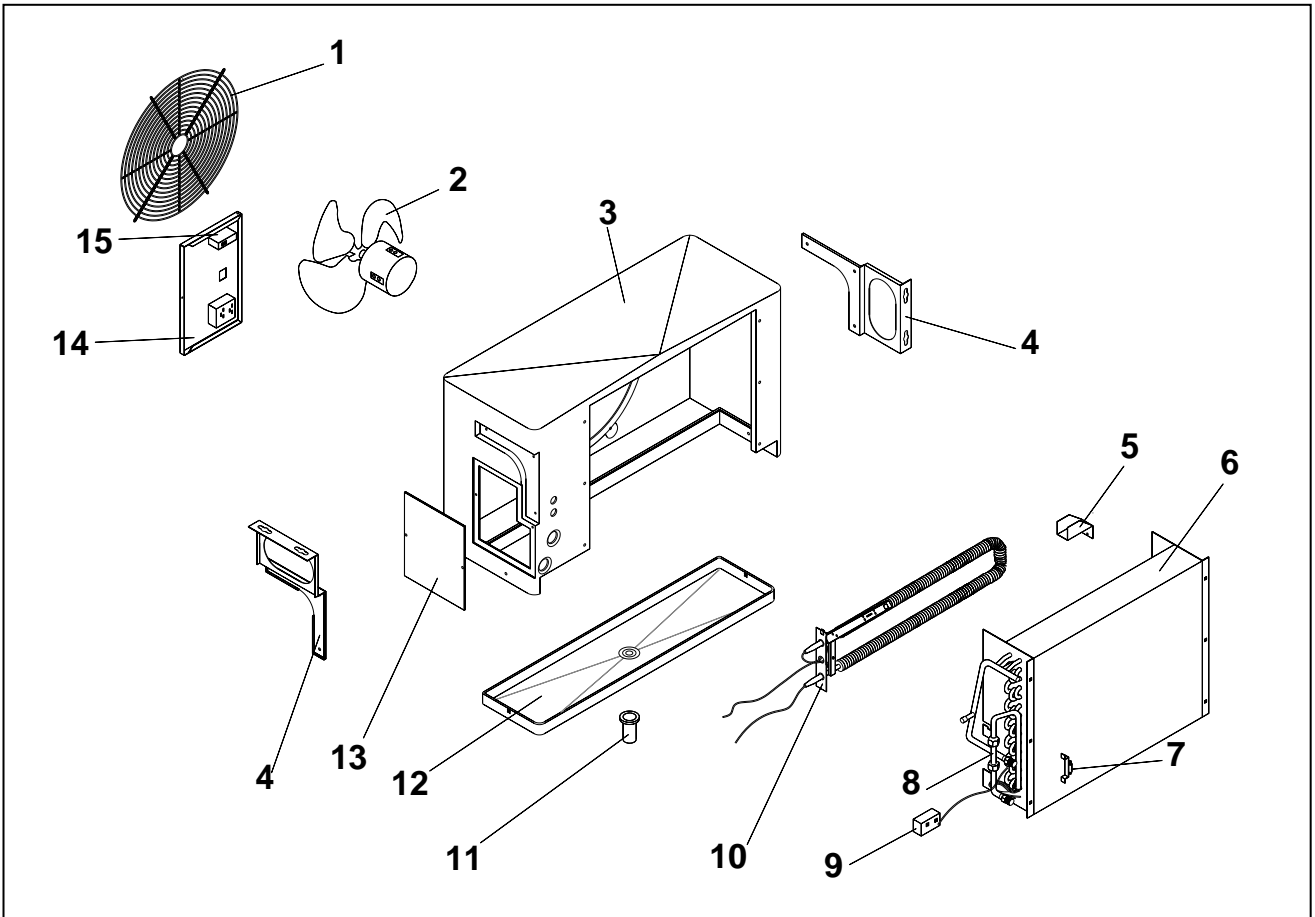
- Pipe sizes are based on:-  
Minimum of 3.8 m/s (750 fpm) suction gas velocity for horizontal or downflow.  
Minimum of 7.6 m/s (1500 fpm) suction gas velocity for upflow.  
Maximum of 15.2 m/s (3000 fpm) suction gas.
- Where vertical risers exceed 3m, oil traps must be formed in the pipe. This will help ensure that oil returns to the compressor. Typically fit an oil trap every 3m with a trap at the bottom of the riser.

- In calculating equivalent lengths of pipe runs, the effect of bends and fittings must be taken into account. The table below covers the fittings most likely to be encountered in this installation.

The equivalent lengths of all the fittings in a pipe run should be added together and the total added to the actual pipe length in order to calculate the total equivalent length.

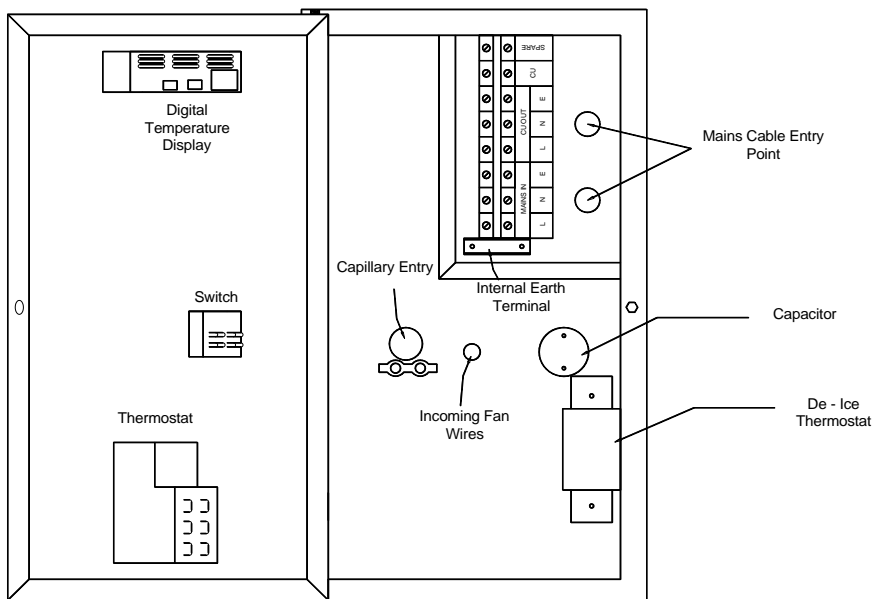
- Use the shortest possible route, avoiding sharp bends.
- Completely insulate the suction line, fully over the indoor unit drain tray.

# CX INDOOR UNIT COMPONENT IDENTIFICATION

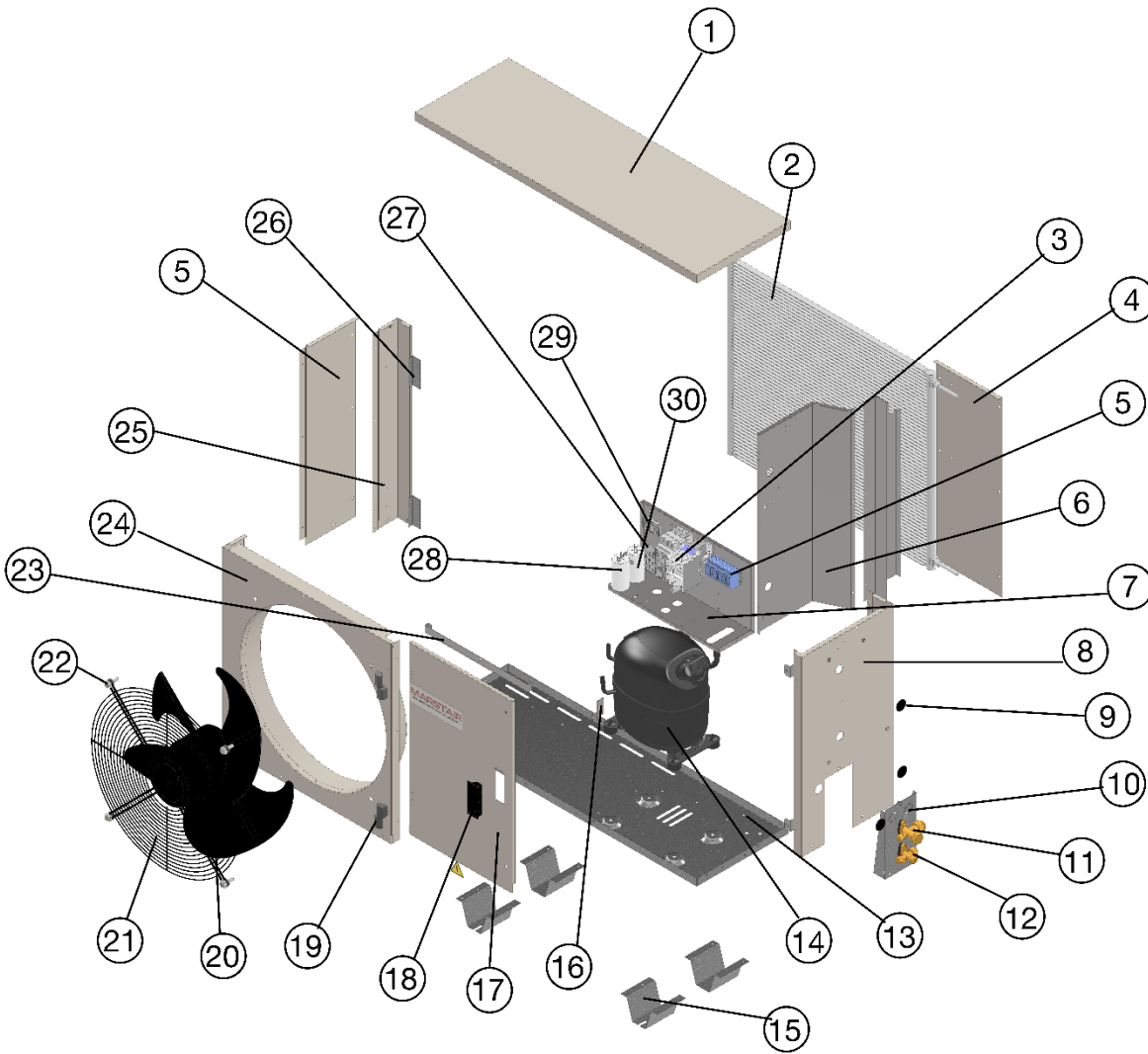


|   |  |    |                          |
|---|--|----|--------------------------|
| 1 | Grille                                       | 9  | De-ice stat (option)     |
| 2 | Fan / motor                                  | 10 | Heater assembly (option) |
| 3 | Case   | 11 | Drain stub adaptor       |
| 4 | Wall / ceiling mounting brackets             | 12 | Drain tray               |
| 5 | Heater bracket                               | 13 | Side access panel        |
| 6 | Coil assembly                                | 14 | Electrics box door       |
| 7 | Thermostat bulb & bracket                    | 15 | Digital display (option) |
| 8 | Restrictor assembly / extended pipe (option) |    |                          |

## INSIDE VIEW OF ELECTRICS BOX



# CKC OUTDOOR UNIT COMPONENT IDENTIFICATION



|    |                         |    |                        |    |                      |
|----|-------------------------|----|------------------------|----|----------------------|
| 1  | LID                     | 12 | SERVICE VALVE (LIQUID) | 22 | DAMPING WASHER       |
| 2  | MICROCHANNEL COIL       | 13 | BASE                   | 23 | DOOR BRACKET         |
| 3  | CONTACTOR & OVERLOAD    | 14 | COMPRESSOR             | 24 | FASCIA PANEL         |
| 4  | REAR ACCESS PANEL       | 15 | MOUNTING FOOT          | 25 | CORNER PANEL         |
| 5  | TERMINALS               | 16 | DOOR STOPPER           | 26 | COIL BRACKET         |
| 6  | BULKHEAD PANEL          | 17 | HINGED DOOR            | 27 | FAN SPEED CONTROLLER |
| 7  | ELECTRICS BOX           | 18 | HANDLE                 | 28 | FAN CAPACITOR        |
| 8  | SIDE PANEL              | 19 | HINGE                  | 29 | TIMER                |
| 9  | BLANKING PLUGS          | 20 | FAN / MOTOR ASSEMBLY   | 30 | COMPRESSOR CAPACITOR |
| 10 | VALVE PANEL             | 21 | FAN GUARD              |    |                      |
| 11 | SERVICE VALVE (SUCTION) |    |                        |    |                      |

## Commissioning Check List

The following information will be required to validate your 5yr parts warranty

| Check and record                  | Value     | Time Held For |
|-----------------------------------|-----------|---------------|
| Leak (tightness) test pressure    | (bar)     | (min)         |
| Strength (pressure) test pressure | (bar)     | (min)         |
| Evacuation level                  | (microns) | (min)         |

|                              | Value     |
|------------------------------|-----------|
| Low pressure (gauge)         | (barg)    |
| Suction line temperature     | (°C)      |
| Evaporator superheat         | (K)       |
| Evaporator air ON / OFF      | (°C) (°C) |
| High pressure (gauge)        | (barg)    |
| Liquid line temperature      | (°C)      |
| Condenser sub cooling        | (K)       |
| Condenser air ON / OFF       | (°C) (°C) |
| Compressor current           | (A)       |
| Head pressure control set    | (Y/N)     |
| Refrigerant type             |           |
| Charged weight               | (Kg)      |
| Additional POE oil added     | (g)       |
| Pipe run length              | (m)       |
| Suction pipe size            | (")       |
| Liquid / Expansion pipe size | (")       |